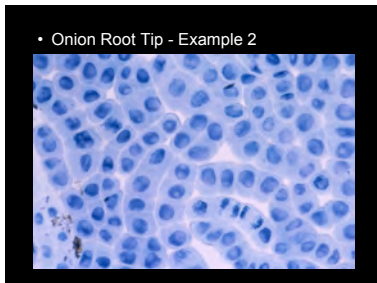
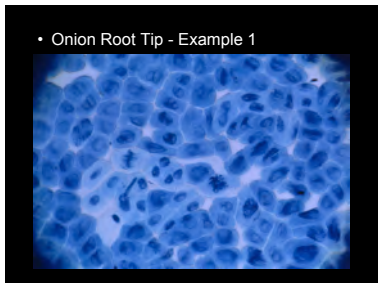
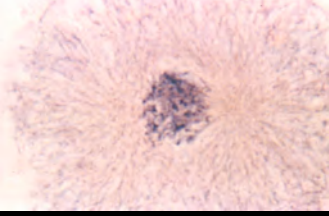


Mitosis
Onion Root Tip
(plant cell)

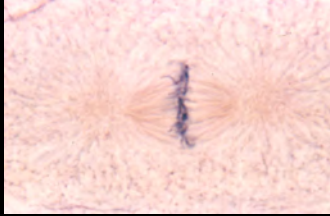


Mitosis
Whitefish
(animal cell)

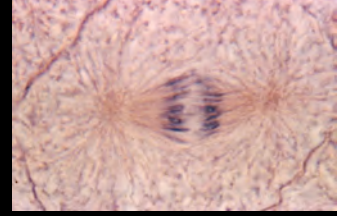
• Whitefish - Mitosis - Prophase



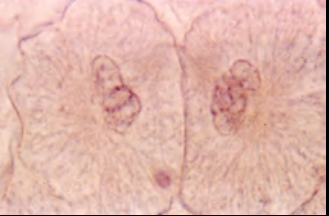
• Whitefish - Mitosis - Metaphase



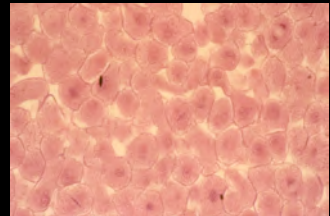
• Whitefish - Mitosis - Anaphase



• Whitefish - Mitosis - Telophase



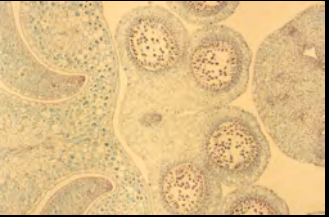
• Whitefish - Example



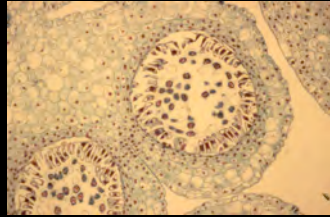
Meiosis

Lily Anther
(microsporogenesis)

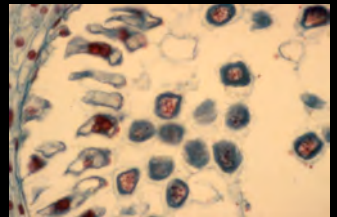
• Lily Anther - Meiosis - 10X



• Lily Anther - Meiosis - 20X



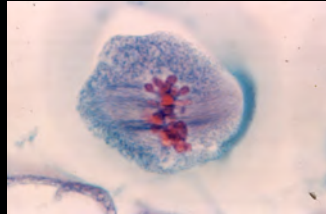
• Lily Anther - Meiosis - 40X



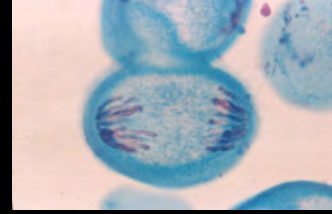
• Lily Anther - Meiosis - Prophase I



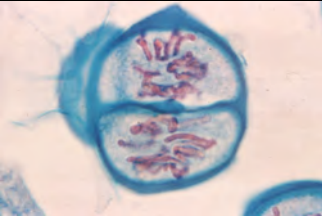
• Lily Anther - Meiosis - Metaphase I



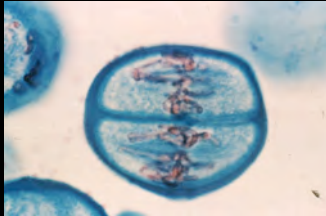
• Lily Anther - Meiosis - Anaphase I



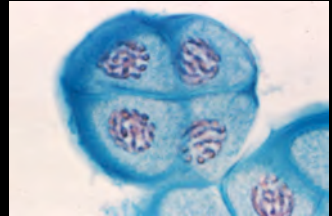
• Lily Anther - Meiosis - Prophase II



• Lily Anther - Meiosis - Metaphase II



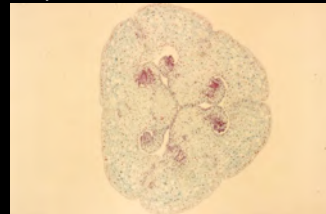
• Lily Anther - Meiosis - Telophase II



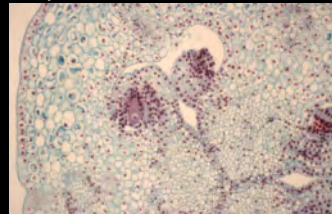
Meiosis

Lily Ovule
(megasporogenesis)

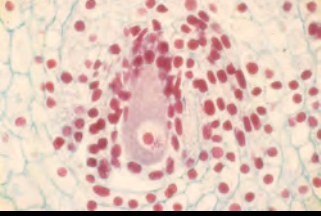
• Lily Ovule - Meiosis - 10X



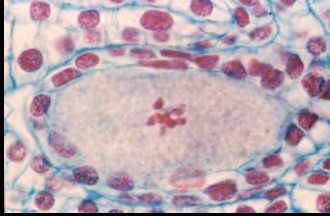
• Lily Ovule - Meiosis - 20X



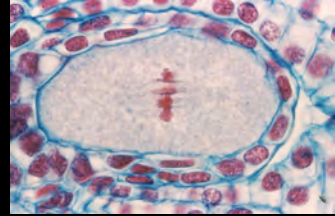
• Lily Ovule - Meiosis - 40X



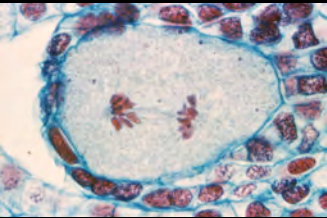
• Lily Ovule - Meiosis - Prophase I



• Lily Ovule - Meiosis - Metaphase I



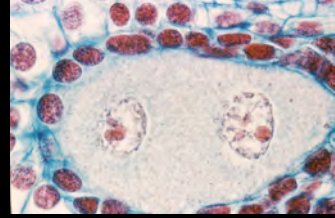
• Lily Ovule - Meiosis - Anaphase I



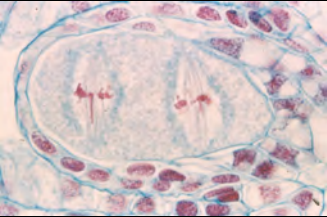
• Lily Ovule - Meiosis - Telophase I



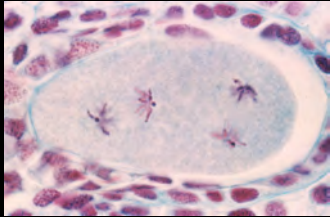
• Lily Ovule - Meiosis - Prophase II



• Lily Ovule - Meiosis - Metaphase II



• Lily Ovule - Meiosis - Anaphase II



• Lily Ovule - Meiosis - Telophase II

